


NOTE- PERFORMANCE AS PER ISO 9906 GRADE-2B

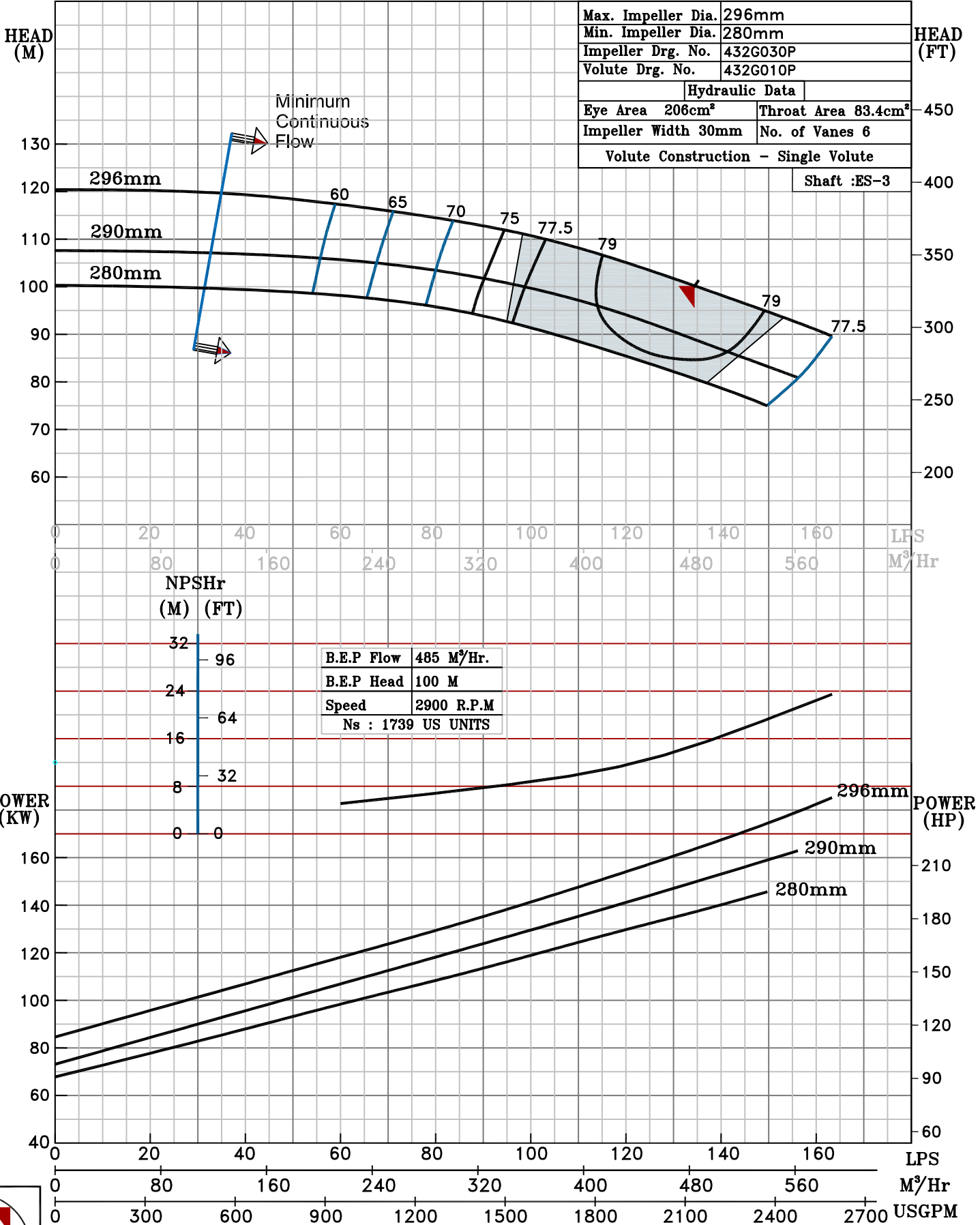
PERFORMANCE CURVE OF ES 125-315 @2900 R.P.M		ES 125-315/X/403252	
 PUMPSENSE <i>ISO 2858</i> ES RANGE	MODEL - ES 125-315	WORKING PRESS. 16 bar	
	SIZE 150x125-296	TEST PRESS. 24 bar	
	TYPE - END SUCTION BACK PULL OUT		
		SPEED 2900 rpm	
		DATE - 31.05.18	

SHADED REGION ON THE H-Q CURVE REPRESENTS OPTIMUM SELECTION ZONE

PUMP PERFORMANCE CHARACTERISTICS COMPUTED BASED ON CLEAN COLD WATER S.G 1.0

Max. Impeller Dia.	296mm
Min. Impeller Dia.	280mm
Impeller Drg. No.	432G030P
Volute Drg. No.	432G010P
Hydraulic Data	
Eye Area 206cm ²	Throat Area 83.4cm ²
Impeller Width 30mm	No. of Vanes 6
Volute Construction - Single Volute	

Shaft :ES-3



2900 RPM